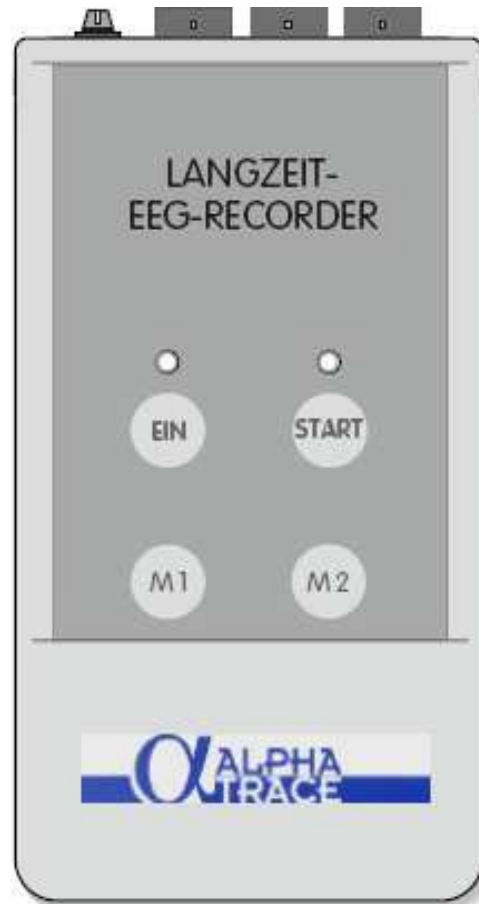


24-h ambulatory EEG



B.E.S.T.
medical systems

Dr. Grossegger & Drbal Ges.m.b.H.
Ruthgasse 19/1, A-1190 Wien

Tel.: +43-1 368 17 97
Fax.: +43-1-367 70 23
Mail.: best_medical@aon.at
Home: www.alpha-trace.at

© B.E.S.T. medical systems All rights reserved

Distributor (NL):

Neuro Medical

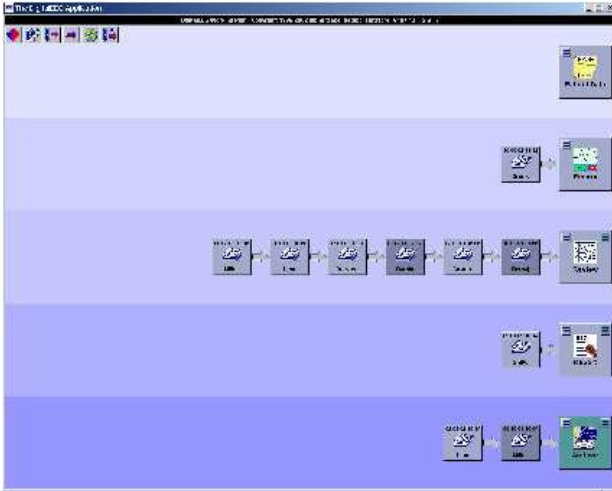
de Olmen 29, 6903 BL Zevenaar
Netherlands

Tel.: +31-316 341 876

ALPHA

EEG recording made easy

The *alpha-trace digitalEEG* truly delivers „digital EEG at your fingertips“. The unique **Graphic Working Plan** offers an intuitive interface and an up- to-date view of all EEG activities on your *alpha-trace digitalEEG* network; in real-time and network-wide.



One single click on a session icon lets you have access to all relevant patient and recording information plus direct access to prior reports.

A powerful database not only manages all patient and recording data but also keeps track of your EEG recordings, reports, analyses and even archive media. For different applications you may define different settings (e.g. EEG recording with reduced channel count, ...) with all parameters such as channels, montages, markers, filter settings, etc. preset.

24-h ambulatory EEG recording

For 24-h ambulatory EEG recording *alpha-trace* offers a very compact digital recorder with 16 channels. Enter patient data and start a test recording with the recorder connected to your PC/Notebook based *alpha-trace digitalEEG* workstation via optically isolated serial (or USB) interface cable (wireless optional). Perform an impedance test to assure proper seating of the EEG electrodes on your patient. View the EEG traces on the workstation's monitor before disconnecting the recorder and releasing the patient for ambulatory EEG recording for 24 hours or longer.

When the patient returns retrieve the compact flash memory card from the recorder and import the data onto your *alpha-trace digitalEEG* workstation. Now the ambulatory EEG is part of your EEG data-base and ready for review, optional quantitative analysis, report generation and archive.

Swift EEG review and reporting

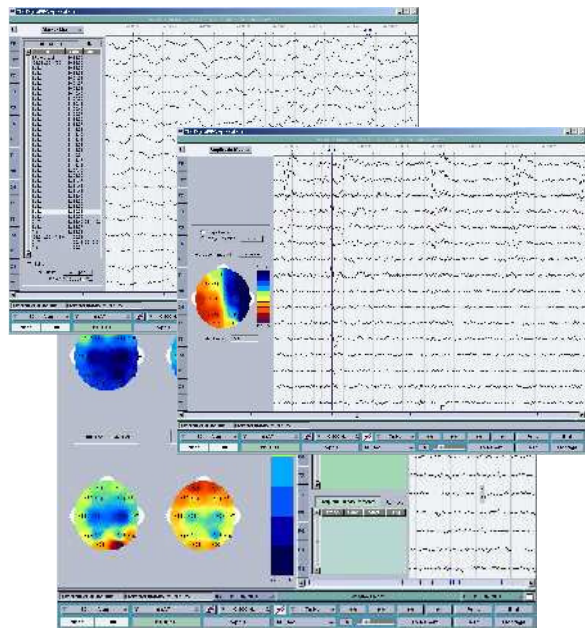
With the *alpha-trace digitalEEG* you will enjoy EEG review and reporting. Select the session from the Graphic Working Plan and it's all at your fingertips: patient and recording information, marker and event list, manual and automatic paging with adjustable paging speed, remontaging, measurements of amplitude, time-difference, and frequency, review of prior EEG traces and reports and much more.

The Graphic Working Plan helps you structure the work in your lab. Whether you have a single station or a large network of multiple recording and review stations you will always have the current view on all EEG activities.

Create your own report templates and use the auto text function to speed up your report generation. Database contents such as patient name, birth date, etc. are automatically inserted into the report file. With the **SpeedLink** function you can, with the click of a button, add an EEG or Brain Map (optional) page to the report.

Quantitative EEG and Brain Mapping

A powerful option for the *alpha-trace digitalEEG* is the software module for quantitative EEG and Brain Mapping offering amplitude, power and frequency mapping, spectral and coherence analysis.



Technical Data

EEG amplifier

Biosignal-channels:	16
Reference inputs:	14
Bipolar inputs:	2
Noise:	1,2 μ Vpp
CMRR:	> 77 dB
Input impedance:	> 100 M Ω (50 Hz)
High pass filter:	0,88 Hz (time constant 0,18 s)
Low pass filter:	69 Hz
Amplification:	615 (\pm 2%)
Measuring range:	\pm 2 mV
Digital resolution:	16 Bit
Impedance test:	yes
Dimensions:	12 x 6,5 x 2,2 cm
Weight:	170 gram (incl. battery/memory card)
Memory card:	Compact flash 512 MB
Power supply:	2x AA akku/battery
Supply voltage:	2,2 to 3,6 V
Recording time:	~60 h with NiMH akkus ~90 h with batteries
PC interface:	serial COM (USB with adapter)
Electrode input:	3 connection ports for electrode assemblies
User interface:	two control keys, two marker keys